

**FULL FLOOR AVAILABLE**

# 200 NEWBURY STREET

Boston, Massachusetts



## 11,250 SF AVAILABLE

### BUILDING FEATURES

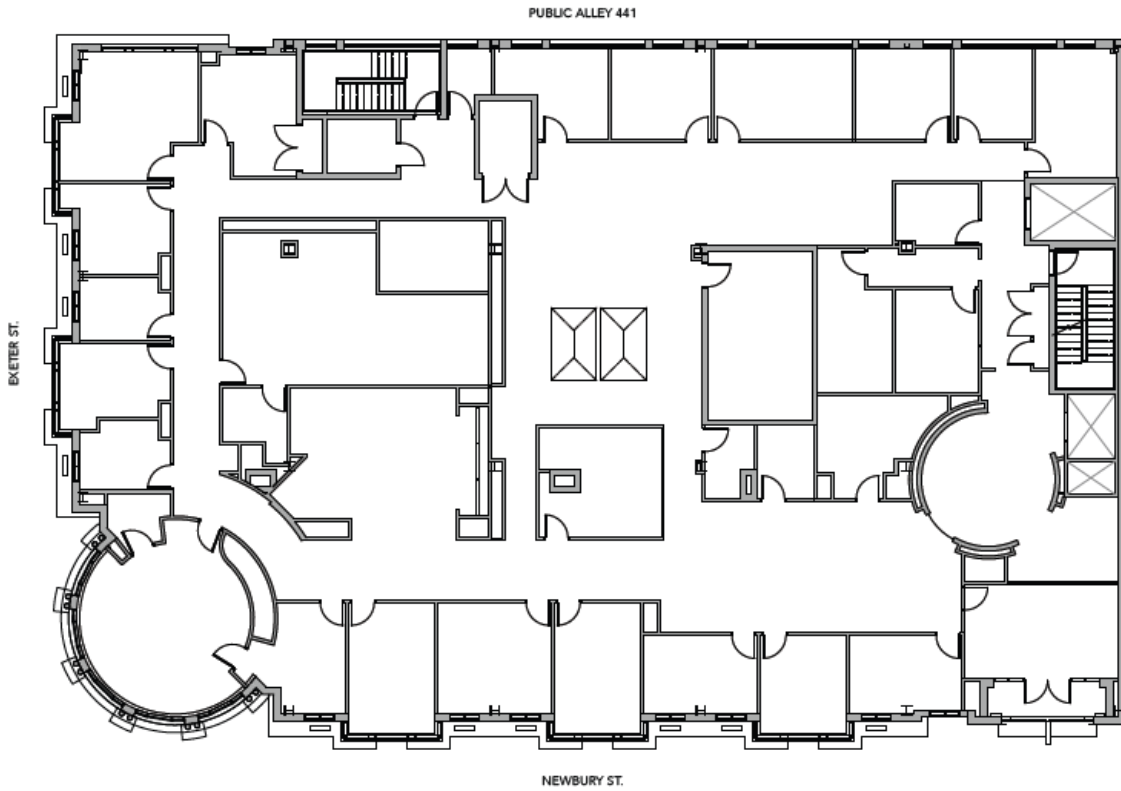
- Located on the corner of Newbury and Exeter Streets
- Newbury Street facing window line with balcony
- Hourly parking in the building
- Easy access to Green Line and Back Bay MBTA Station



11,250 RSF AVAILABLE FOR LEASE

# 200 NEWBURY STREET

Boston, Massachusetts



## RENDERINGS



For more information, please contact:

**PETER BEAN**  
781.771.7715 | [pbean@hunnemanre.com](mailto:pbean@hunnemanre.com)



@2026 Hunneman. All rights reserved. All information has been obtained from sources believed reliable but no warranty or representation is verified for accuracy or completeness. Caution and independent investigation of property and information should be verified. Reliance on this information is at your own risk.