



OFFICE SPACE FOR LEASE

145 TREMONT STREET

Boston, Massachusetts

145 TREMONT STREET

Boston, Massachusetts



>1 MIN. WALK
IMMEDIATE ACCESS TO DOWNTOWN
CROSSING & PARK STREET STATION
(Red, Orange, & Green lines)



0.7 MILES
SOUTH STATION MBTA
(Red Line, Commuter Rail, Amtrak, Acela)



**WALKING DISTANCE
TO PARKING**
Boston Commons Garage



**DIVERSE SELECTION OF FOOD
OPTIONS IN IMMEDIATE AREA**

145 TREMONT STREET

Boston, Massachusetts



BUILDING SPECIFICATIONS

- AVAILABLE SF:** 3rd Floor - 4,413 SF
(can subdivide to 2,523 SF / 1,890 SF)
4th Floor - 4,413 SF
(can subdivide to 2,523 SF / 1,890 SF)
6th Floor - 4,413 SF
Flexible Basement Storage
- PROPERTY TYPE:** Office
- BUILDING SIZE:** 41,413 SF
- STORIES:** 8
- YEAR BUILT:** 1929, Renovated 2020
- RENT:** Negotiable

BUILDING FEATURES

- 145 Tremont offers modern conveniences including two new elevators (cabs & mechanicals) and new building wide HVAC system.
- Immediate access to the Park Street Red and Green Lines.
- Conveniently located near the Boston Common Garage.
- Incredible views overlooking Boston Common and the State House.

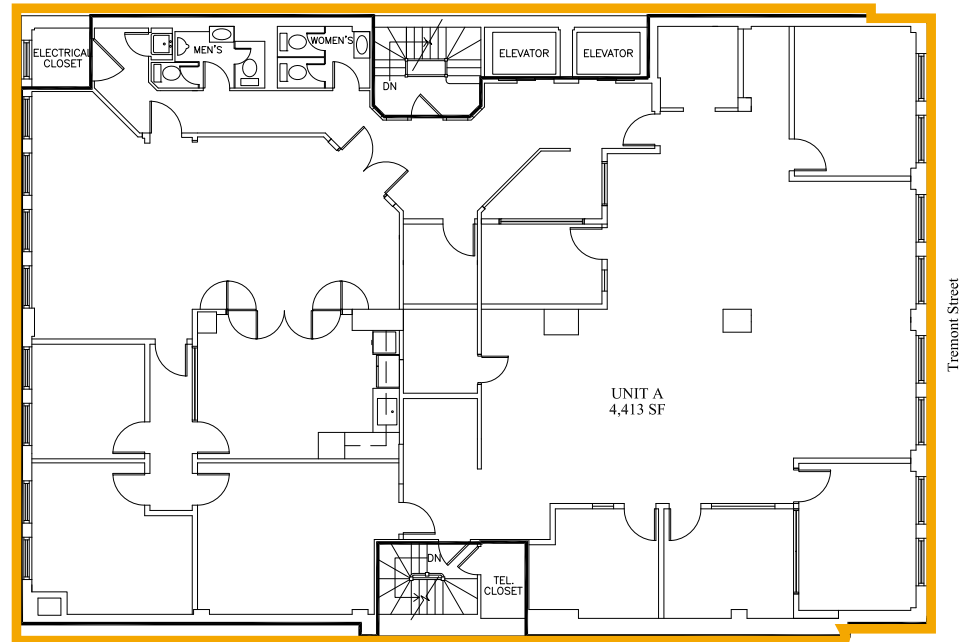


CLICK HERE
TO VIEW PROPERTY TOUR

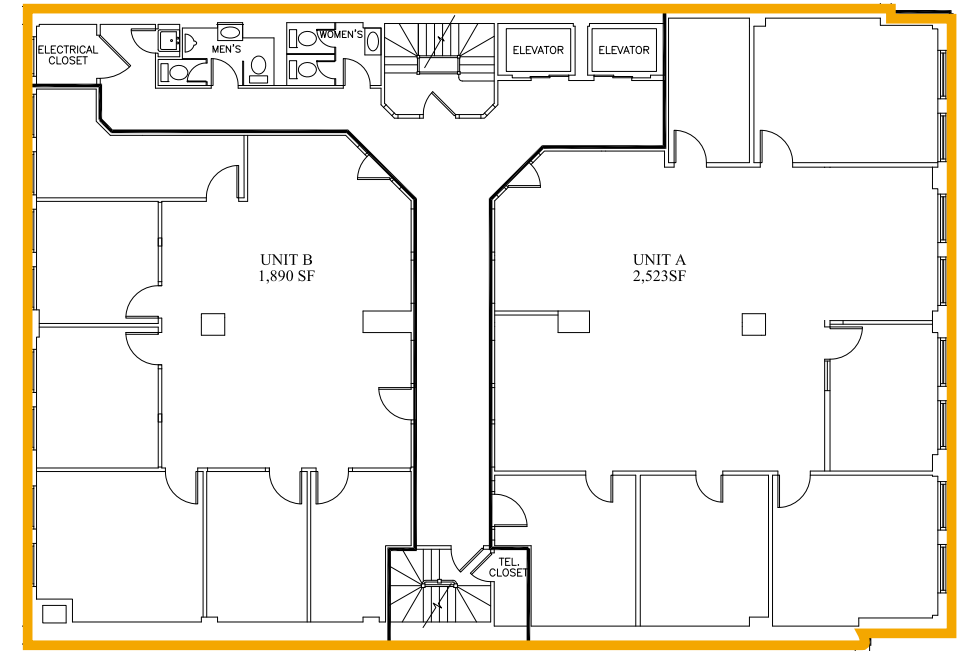


145 TREMONT STREET / FLOOR PLANS

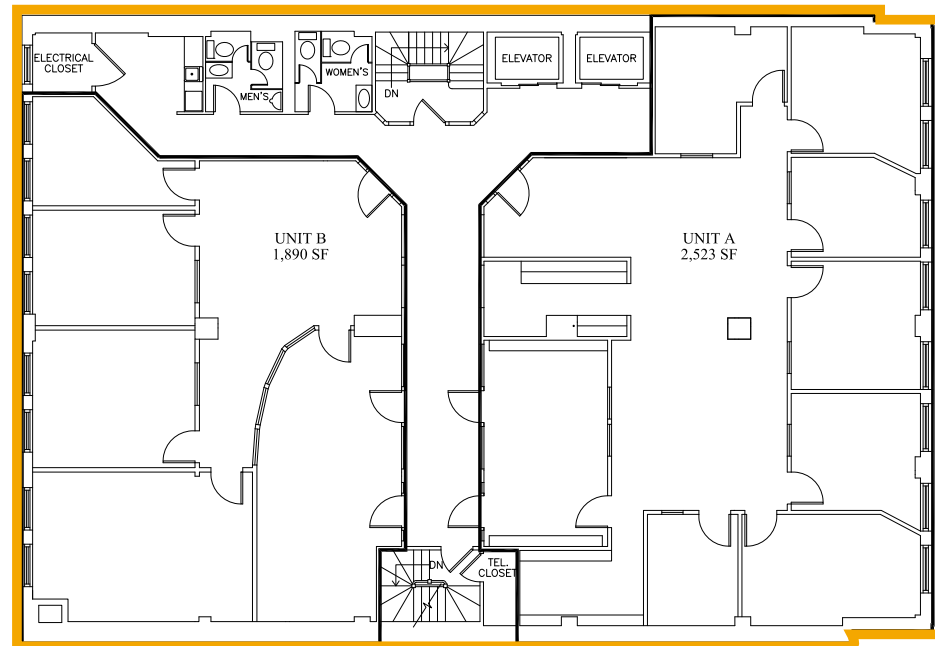
6th Floor | 4,413 SF



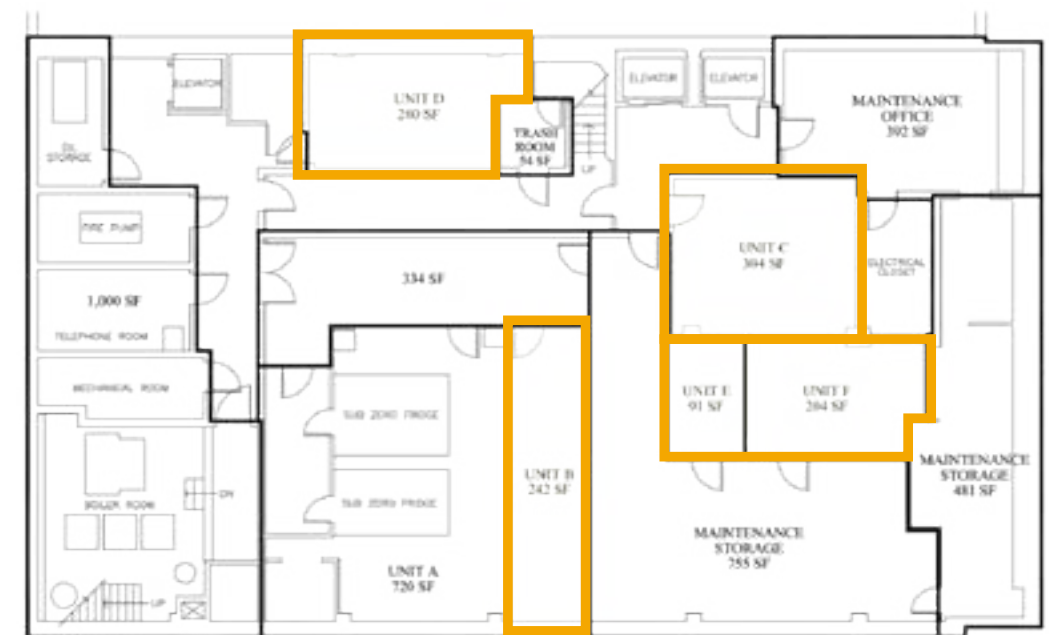
3rd Floor | 4,413 SF - Can Subdivide to 2,523 / 1,890 RSF



4th Floor | 4,413 SF - Can Subdivide to 2,523 / 1,890 RSF



Basement | 91 - 1,121 SF





OFFICE SPACE FOR LEASE

145 TREMONT STREET

Boston, Massachusetts

CONTACT US TO ARRANGE A TOUR

PETER BEAN

781.771.7715

pbean@hunnemanre.com

PETER EVANS

617.457.3402

pevans@hunnemanre.com

WILL CARR

617.816.5970

wcarr@hunnemanre.com



303 Congress Street, Boston, MA 02210 | 617.457.3400 | www.hunnemanre.com

@2026 Hunneman. All rights reserved. All information has been obtained from sources believed reliable but no warranty or representation is verified for accuracy or completeness. Caution and independent investigation of property and information should be verified. Reliance on this information is at your own risk.