

CLASS A BOUTIQUE MEDICAL & OFFICE BUILDING **FOR LEASE**

70 HASTINGS STREET

Wellesley, Massachusetts

NEW TO MARKET | RECENTLY COMPLETED RENOVATIONS

1,430 & 2,350 SF Available



70 HASTINGS STREET

Wellesley, Massachusetts

PROPERTY SPECIFICATIONS

| | |
|--------------------------|--|
| BUILDING SIZE | 26,351 SF |
| AVAILABLE SF: | First Floor: 1,430 SF & 2,350 SF |
| PROPERTY TYPE: | Class A Boutique Office & Medical |
| LAND: | 1.18 Acres |
| YEAR BUILT: | 2022 Full Renovation |
| PARKING: | 3.10/1,000 SF |
| LOCATION: | Located 0.25 miles from the Rt. 9 / Rt. 128 interchange; 1.5 miles from I-95 / Masspike interchange |
| NEARBY AMENITIES: | Close proximity to the Chestnut Hill Mall, Natick Mall & Needham St. retail corridor for dining, local shopping and other recreational amenities |

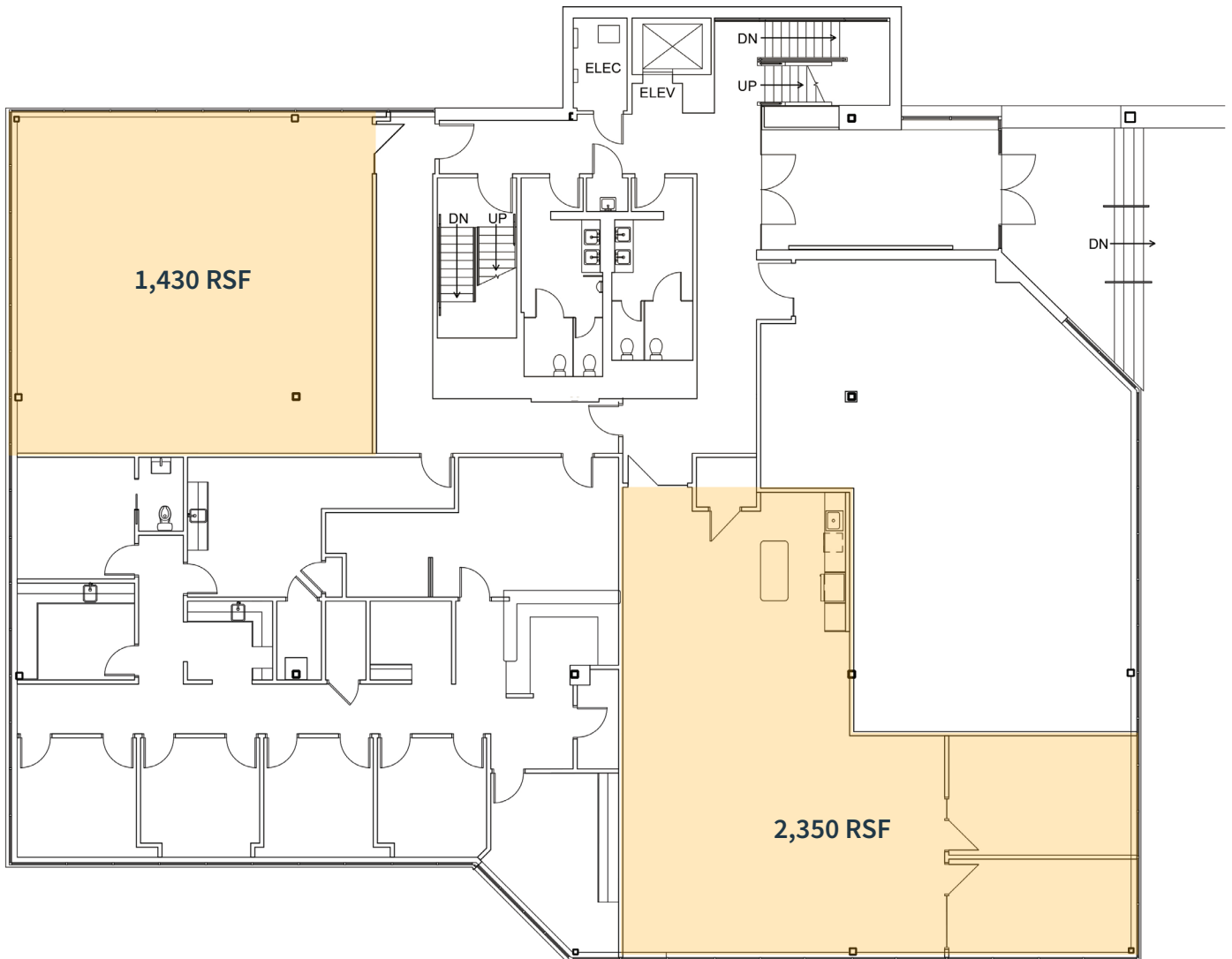
NEW RENOVATIONS

- Complete renovation of main building lobby and all common areas
- Installation of a new façade at main building entrance
- Installation of sprinkler system
- Installation of new life safety fire system
- Installation of new rooftop HVAC units
- Full landscaping upgrade
- New building & monument signage



FIRST FLOOR

AVAILABLE SPACE



FOR LEASE CLASS A BOUTIQUE OFFICE & MEDICAL

70 HASTINGS STREET

Wellesley, Massachusetts



ACCESS



2.1 Miles from
Wellesley Hills
Commuter Rail



2.4 Miles from
Wellesley Farms
Commuter Rail



3 Minute Drive
to I-95



1 Minute Drive
to Route 9



Close proximity to
Mass Pike
(11 Miles to Boston)



30 Minute Drive to
Logan International
Airport

CONTACT US TO ARRANGE A TOUR

NED HALLORAN

Executive Vice President

617.457.3372

nhalloran@hunnemanre.com



303 Congress Street, Boston, MA 02210 | 617.457.3400 | www.hunnemanre.com

@2026 Hunneman. All rights reserved. All information has been obtained from sources believed reliable but no warranty or representation is verified for accuracy or completeness. Caution and independent investigation of property and information should be verified. Reliance on this information is at your own risk.