

BRAND NEW **BUILDING UPGRADES**

# 2300 CROWN COLONY DRIVE

Quincy, Massachusetts

OFFICE SPACE

**5,540 SF Available**





# 2300 CROWN COLONY DRIVE

Quincy, Massachusetts



## PROPERTY SPECIFICATIONS

**BUILDING SIZE:** 45,120 SF

**PROPERTY TYPE:** Class A Office

**FLOORS:** 3

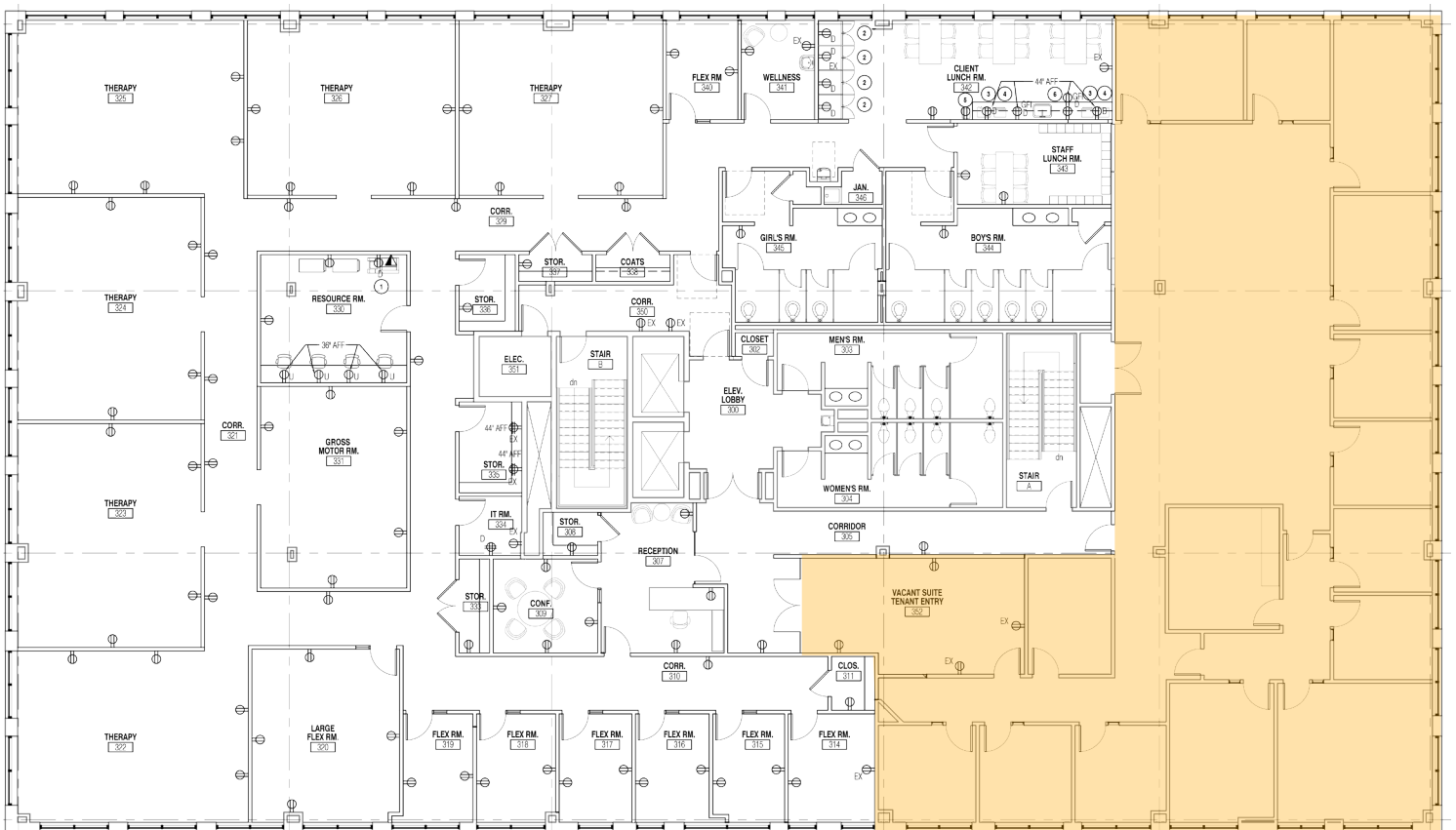
**AVAILABLE SF:** **Floor 3:** 5,540 SF

**YEAR BUILT:** 1999

**PARKING RATIO:** 3.40/1,000 SF

**LOCATION:** Surrounded by Downtown Boston and Cambridge. Strategically located at the intersection of Route 3 and Interstates 93 and 95, the Property offers tremendous transportation options along the regions most traveled highways. Additionally, the Property is located less than a mile away from the Quincy Adams station, offering unparalleled transit access via the MBTA Red Line.

## FLOOR 3: 5,540 SF





FOR LEASE **OFFICE SPACE**

# 2300 CROWN COLONY DRIVE

Quincy, Massachusetts

**5,540 SF Available**



**CONTACT US TO ARRANGE A TOUR**

**NED HALLORAN**

*Executive Vice President*

617.457.3372

[nhalloran@hunnemanre.com](mailto:nhalloran@hunnemanre.com)

**LEEANNE RIZZO**

*Executive Vice President*

617.457.3371

[lrizzo@hunnemanre.com](mailto:lrizzo@hunnemanre.com)

@2025 Hunneman. All rights reserved. All information has been obtained from sources believed reliable but no warranty or representation is verified for accuracy or completeness. Caution and independent investigation of property and information should be verified. Reliance on this information is at your own risk.



303 Congress Street, Boston, MA 02210 617.457.3400 [www.hunnemanre.com](http://www.hunnemanre.com)